



Animation



Video Games



Biomechanics



Simulation Training



Robotics



Neuroscience



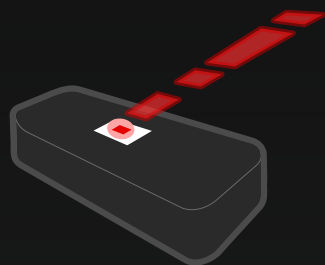
SAN LEANDRO, CA

510.633.2865
INQUIRIES@PHASESPACE.COM

PHASESPACE.COM

PHASESPACE
MOTION CAPTURE
The Active Marker Advantage

THE PHASESPACE ADVANTAGE

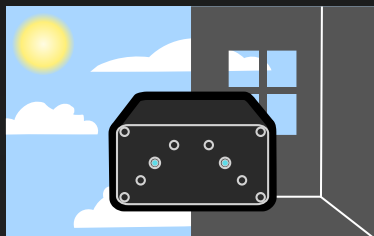


Uniquely Identified Active Markers

High Framerate At Full Resolution

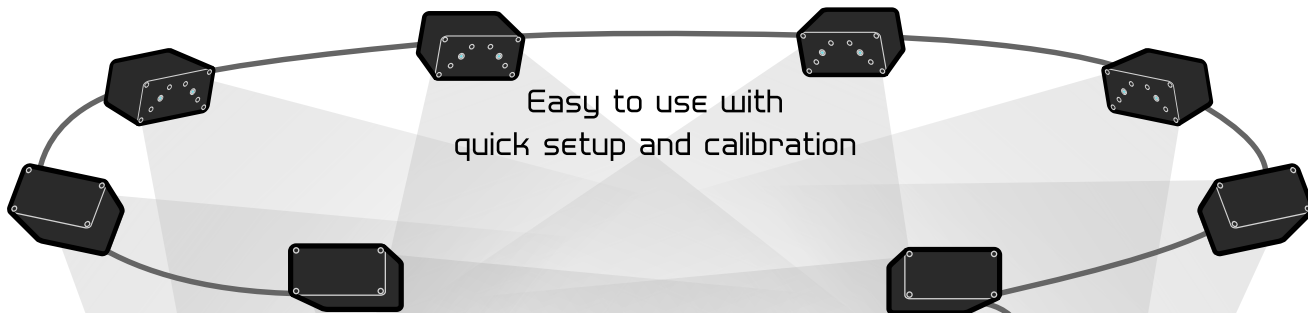
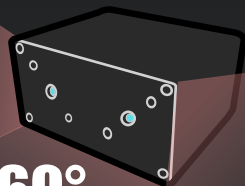


Capture Indoors Or Outdoors

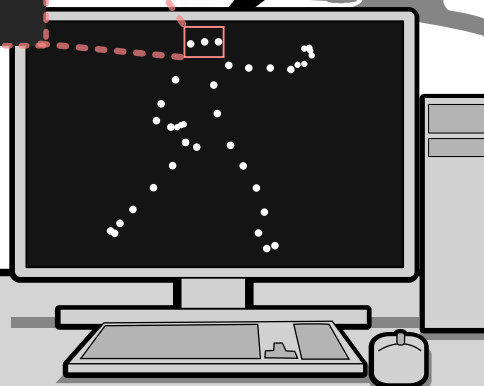
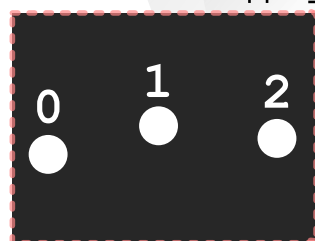


Capture In Large And Small Areas

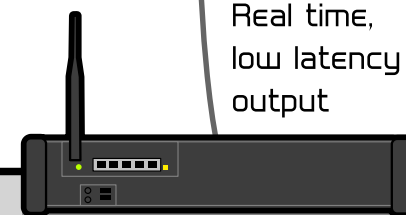
60° FOV



No marker swapping



Real time, low latency output



IMPULSE X2 SYSTEM

FRAME RATE	960 fps at full resolution	MARKER TYPE	Uniquely identified active markers
SUBPIXEL RESOLUTION	30,000 x 30,000	LED TYPE	Visible red and infrared LED options
LATENCY	Less than 10 ms	MARKER DIMENSIONS	As small as 3mm x 4.5mm
CAMERA FIELD OF VIEW	60 degrees, allowing setup in confined areas.	API/SDK	C++, Python, VRPN
NUMBER OF CAMERAS	Up to 50	COMPATIBLE SOFTWARE	MotionBuilder, The MotionMonitor, Visual3D, ORBIS, Unity, LabView...