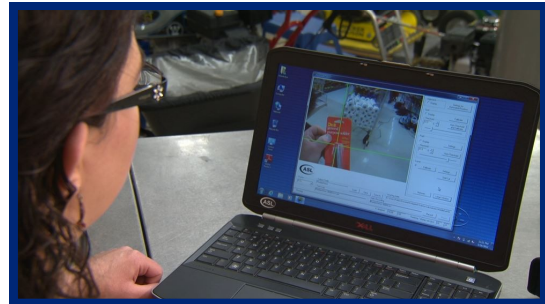


ASL Mobile Eye-5 Glasses

Specifications

Real Time Wireless
Data Transmission
Available !!

MOBILE EYE-5 GLASSES	
Color	Metallic, Silver, Black
Adjustable Monocle	Yes
Exchangeable Scene Lens	Yes, up to 96°
Frames for Glasses	Yes
Children's Optics	Yes
Sensor Resolution	1600 x 1200
Visual Range	60 Degrees Horizontal, 40 Degrees Vertical
Weight	64 g



Observe your participants in real time!



Auto-calibration! Lightweight! Comfortable!

MOBILE EYE-5 SYSTEM	
Eye Tracking Technique	Dark Pupil
Eye Tracking	Monocular, Right Eye
Speed	30 Hz/60 Hz
Accuracy	0.5 degrees
Microphone	Yes
Firmware	Embedded
Calibration	Automatic
Calibration Validation	Yes
Post Calibration	Yes
Outdoor Enhancements	Yes
Synchronization w/ external	Available

MOBILE EYE-5 RECORDER	
Display	5.7 inch LCD
Controls	Touch Sensitive
Storage Media	SD, Micro SD, SD HC Card
Maximum Card Size	32 GB
Maximum File Size/Recording	4– 32 GB
Maximum Recording Time	>3 Hrs
Main Battery	Rechargeable Li-Ion Smart Battery
Main Battery Life	Up to 4 hours
Dimensions (Length x Width x Depth)	192 x 118 x 50.8 mm 7.56 x 4.65 x 2.0"
Weight	648 g, 1.43 lbs
Connection	802.11n or Gigabit Ethernet



Portable! Easy to Carry! Minutes to Set Up!

Applied Science Laboratories
175 Middlesex Turnpike, Bedford, MA 01730 - USA
 ☎ (781) 275-4000 🌐 www.asleyetracking.com
 ✉ asl@asleyetracking.com



Applied Science Labs (ASL)

The Authority in Mobile Eye Tracking

With over 30 years of experience in eye tracking development, Applied Science Laboratories (ASL) in Bedford, Massachusetts, is the recognized authority in eye tracking. Founded by M.I.T. scientists in 1962, ASL developed the first video-based eye tracker in 1974.

ASL developed the first tetherless mobile eye tracking glasses solution for real world applications over 11 years ago. Our current mobile eye tracking solution, the wireless Mobile Eye glasses with powerful data analysis software, is designed and manufactured by ASL and used worldwide in academic research, market research and industrial markets.



THEN



NOW

ASL's cutting-edge innovations include: portable, wearable eye tracking devices, eye/head integration and revolutionary data analysis options. With dynamic, scalable and innovative solutions delivered with world-class customer support, ASL continues to be your complete eye tracking mobile hardware and software provider.

ASL'S eye tracking applications include:

- Usability
- Web Design
- In-Vehicle Research
- Human Factors
- Sports Training
- Vehicle Simulators
- Biosensor integration (EEG, etc)
- Cognitive Studies
- Medical Research
- Virtual Reality



Applied Science Laboratories
175 Middlesex Turnpike, Bedford, MA 01730 - USA
☎ (781) 275-4000 🌐 www.asleyetracking.com
✉ asl@asleyetracking.com



ASL has a history of employing talented people who are technically trained in such areas as electro-optical engineering, electrical engineering, software engineering and control theory. Augmenting the staff are consulting scientists from leading universities. Many members of the staff have been with the Company for 15 years or more and have among them enormous accumulated knowledge of eye tracking technology. In addition, ASL has a world-wide network of technology partners and distributors who facilitate the availability of our extensive line of video-based eye tracking equipment to the global research community.

The Company is housed in 12,000 square feet of modern, light manufacturing space. ASL's reputation has been built on providing outstanding support and customer service that include:

- A dedicated technical support staff with real-world eye tracking research backgrounds
- Customized on-site training programs

STAY CONNECTED WITH ASL:

